



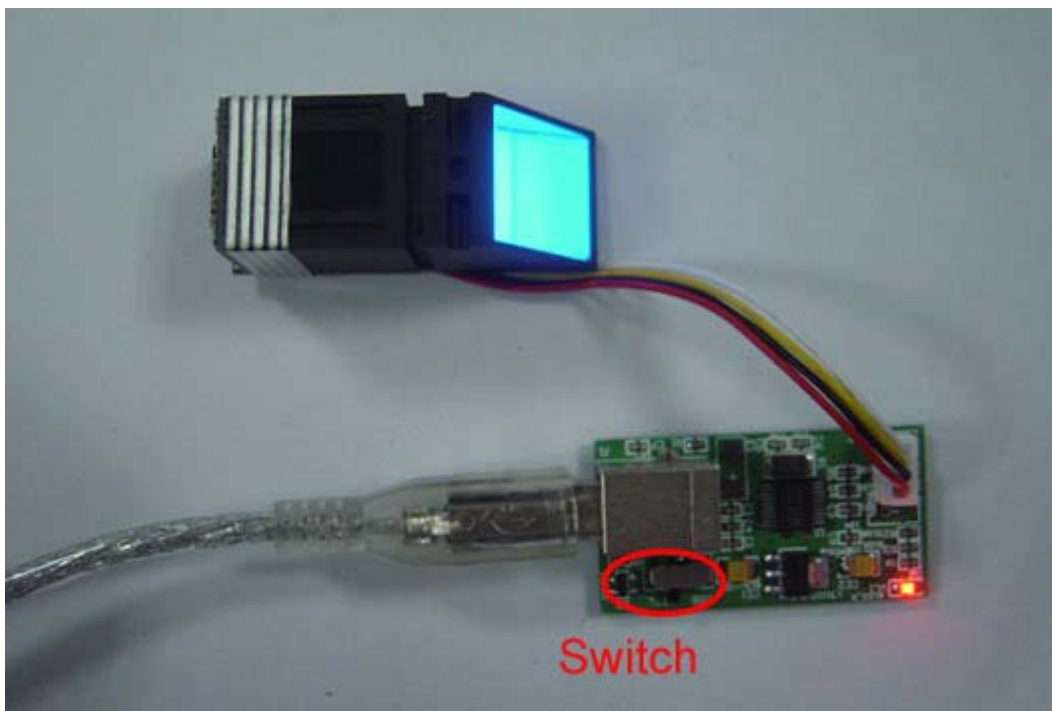
CAMA-SM12/SM20 Testing Software Installation

This Simple software will help clients test functions of CAMA integrated fingerprint module SM12/SM20. Also it will play as reference for the protocol work by the command details along with the SDK manual.

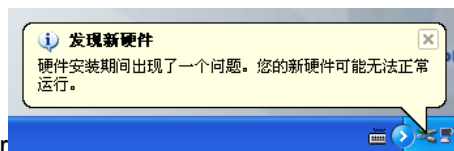
Since SM series are UART port communication, CAMA design an USB testing board to connect Module with PC, then user can check all the functions and commands by the testing software.

Operation steps:

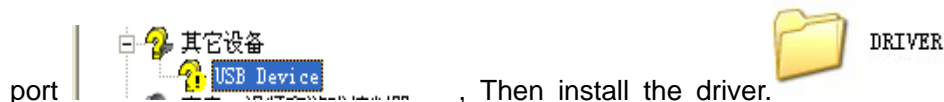
1. Connect module with the USB testing Board by 4Pin cable, and connect the board with PC COM port by USB cable.



Note: The switch should at "TTL" position.



2. There is a requirement of install driver  , Check the PC USB



port , Then install the driver.

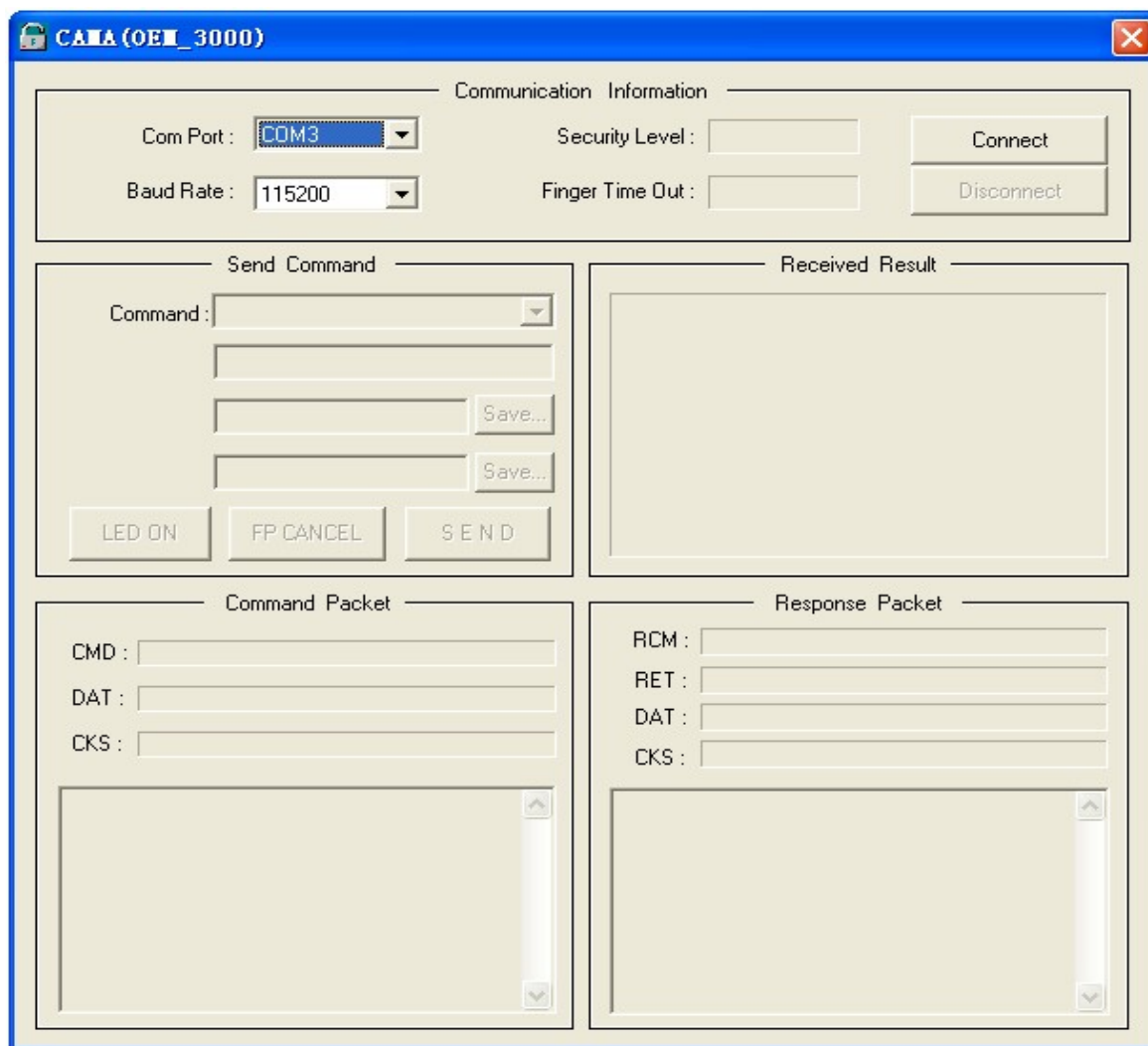
3. Check the PC COM port, and choose the correct port for the software, e.g. here is COM3 as



Serial CH341A



4. Open Software, fill the correct COM port and baudrate (Default baudrate is 115200), then click “Connect”:



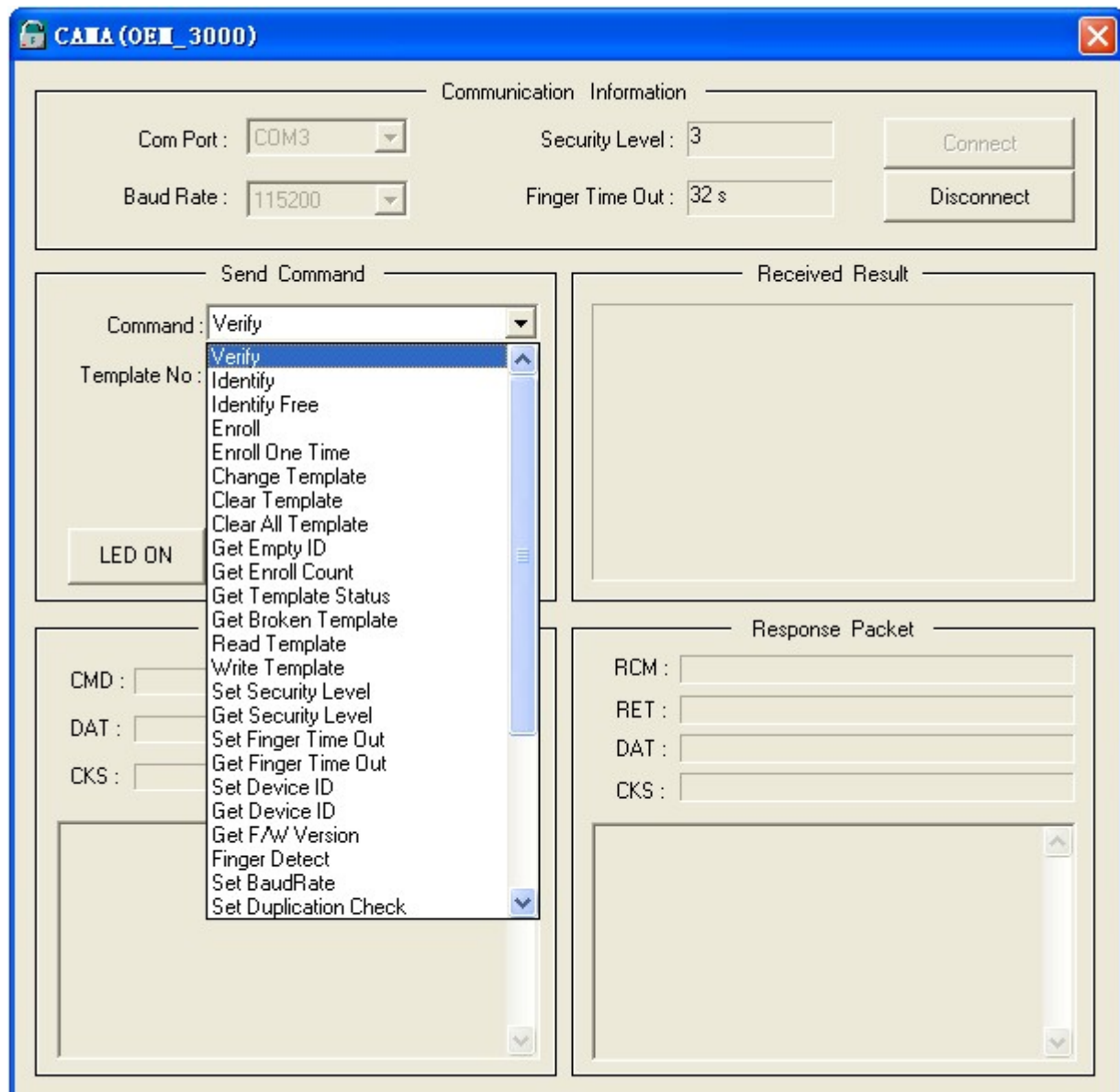


5. After connect, the commands and functions can be tested one by one

The screenshot shows the CAMA (OEM_3000) software interface. The title bar is blue with the text 'CAMA (OEM_3000)' and a close button. The main window is divided into several sections:

- Communication Information:** Contains dropdown menus for 'Com Port' (set to COM3) and 'Baud Rate' (set to 115200). It also has input fields for 'Security Level' (set to 3) and 'Finger Time Out' (set to 32 s). There are 'Connect' and 'Disconnect' buttons.
- Send Command:** Contains a 'Command' dropdown menu, two empty text input fields, and two 'Save...' buttons. At the bottom are buttons for 'LED ON', 'FP CANCEL', and 'SEND'.
- Received Result:** A large text area displaying the message 'Device was connected.'
- Command Packet:** Contains input fields for 'CMD', 'DAT', and 'CKS', followed by a large empty text area with a vertical scrollbar.
- Response Packet:** Contains input fields for 'RCM', 'RET', 'DAT', and 'CKS', followed by a large empty text area with a vertical scrollbar.

Device was connected.



Functions and Commands

With software, user can also check the details of Command packet and Response Packet, which is same as the SDK manual.