

RFT-200-7 Operation Manual

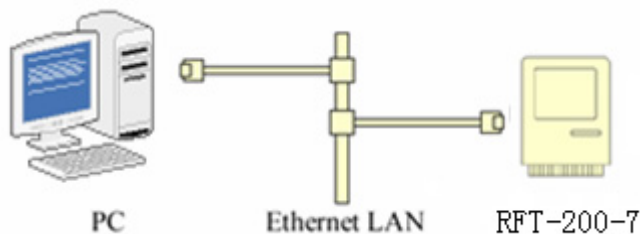
125K RF Card Reader

Ethernet LAN interface

1. Interface

Connect the reader to the Ethernet LAN; or if you need to connect it to PC, please use the cross-over internet wire. Then offer the DC9V power supply.

2. TCP/IP Driver Installation & Port Setting



3. Preparation

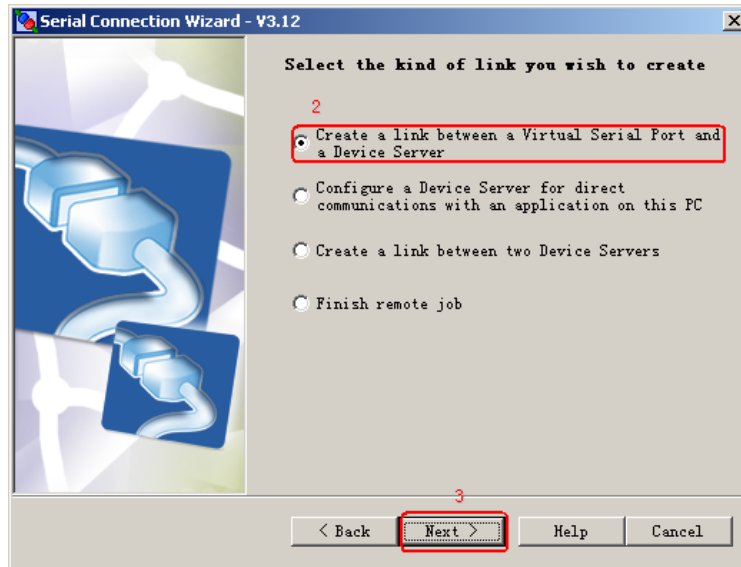
- 1) Install the Driver
- 2) Connect the reader to the local Ethernet LAN, and offer the DC9V power supply. If the reader connects to the Ethernet LAN by HUB or Switch, please use the straight-through wire, and if connects to PC, please use the cross-over wire.
- 3) Please exit the firewall if you have.

4. Setup

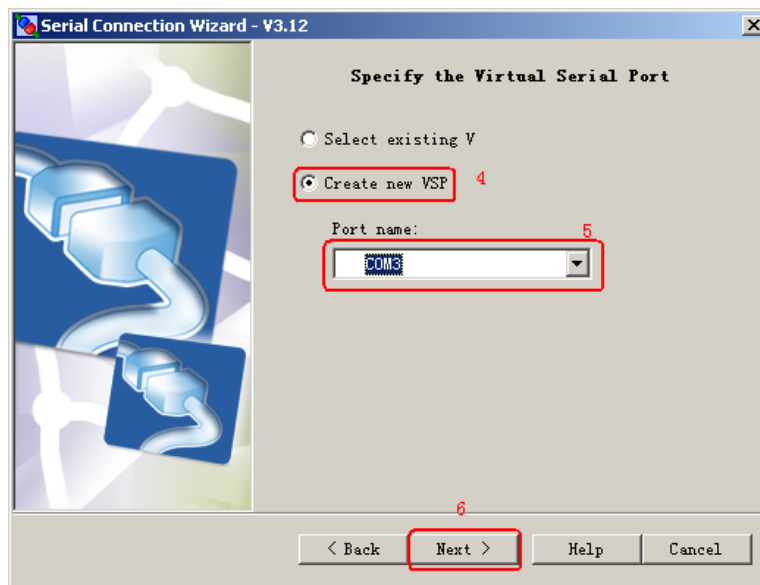
Run the serial connection wizard, do as below:



1. Start to Setup

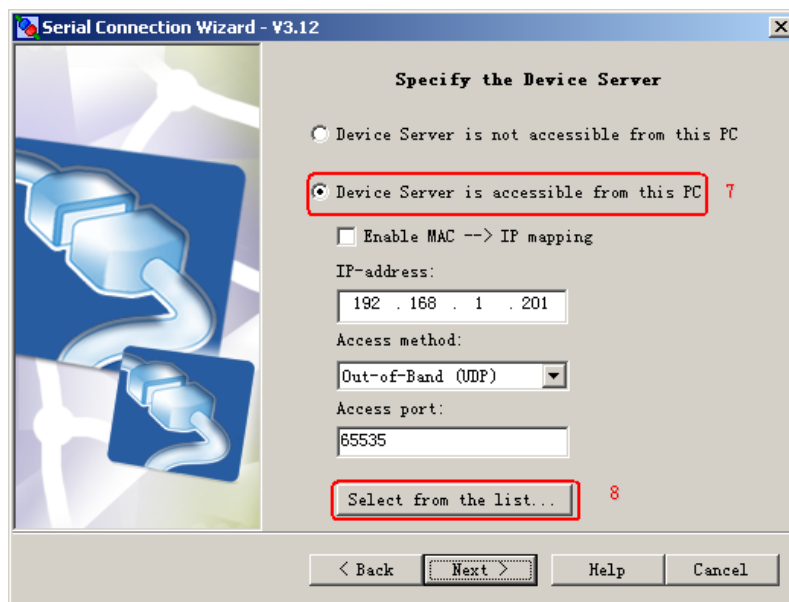


2. Choose the first one in Red



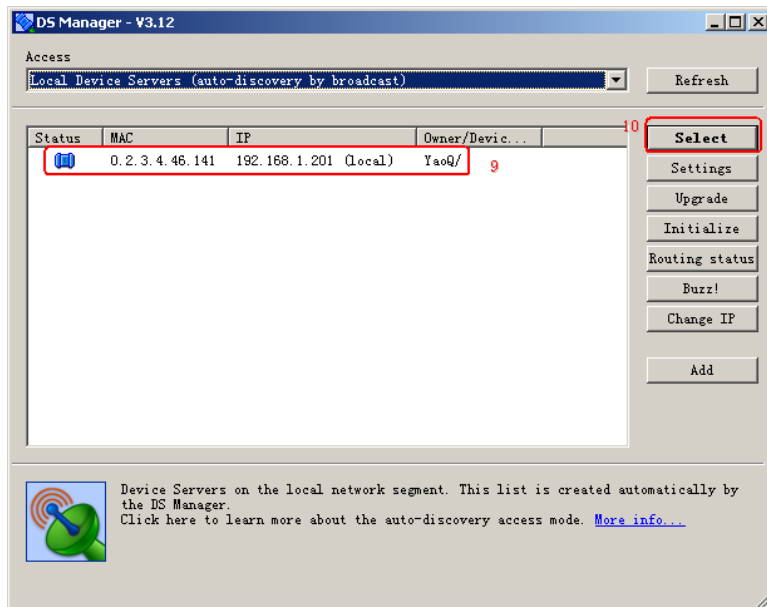
4. Create new VSP

5. Choose a VSP

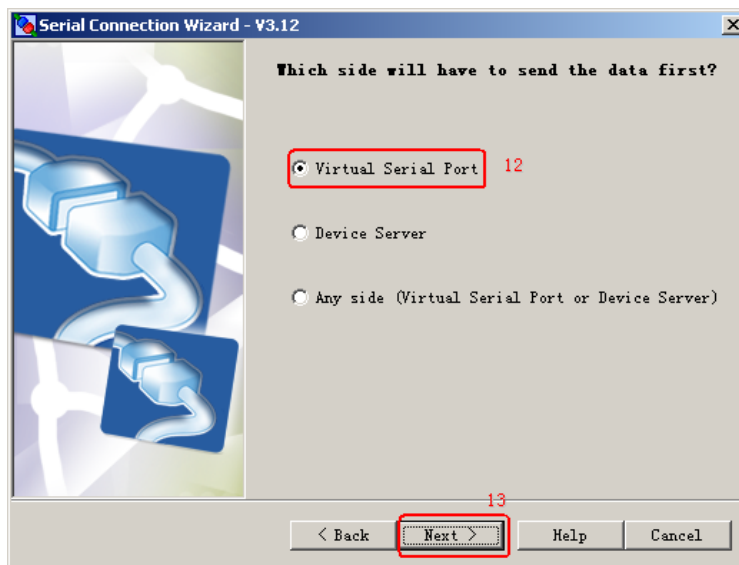
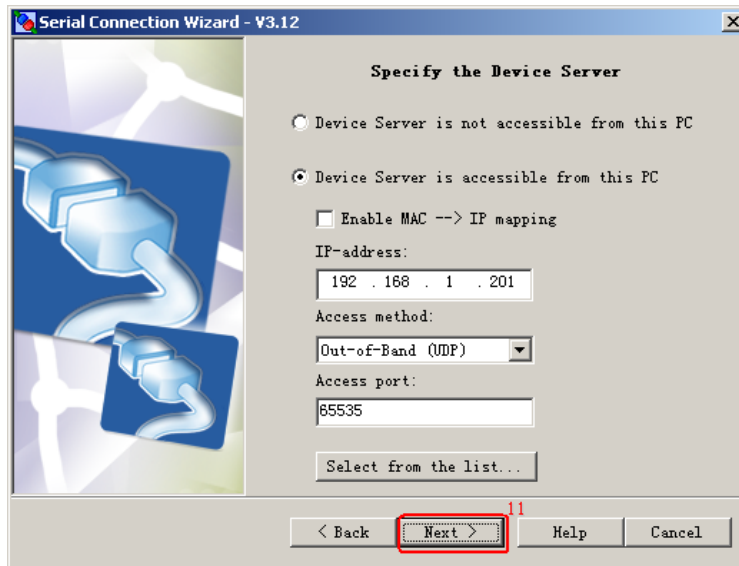


7. Device is connected

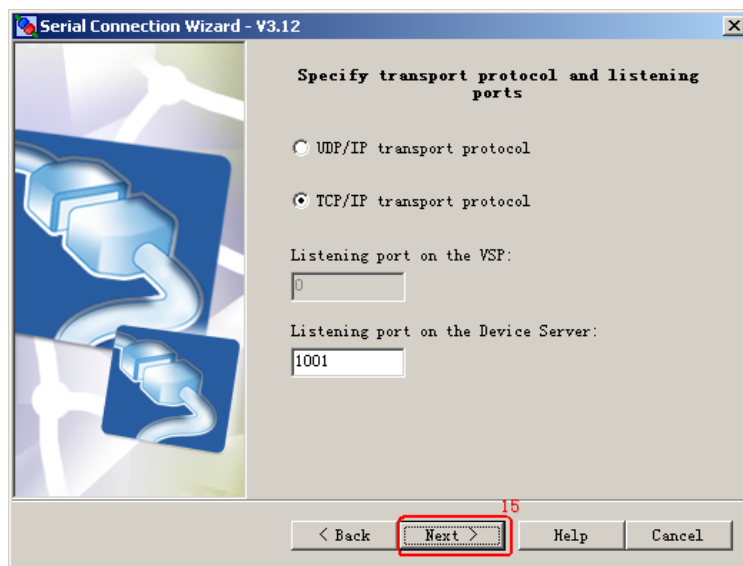
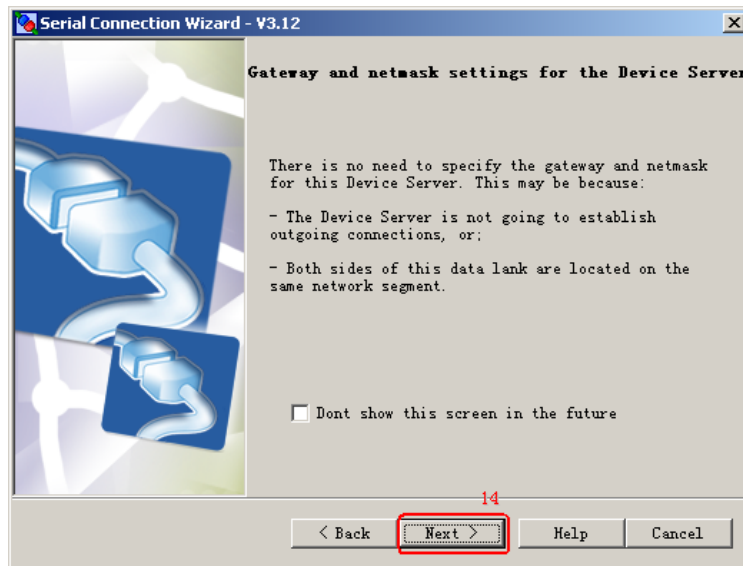
8. Check and select the device



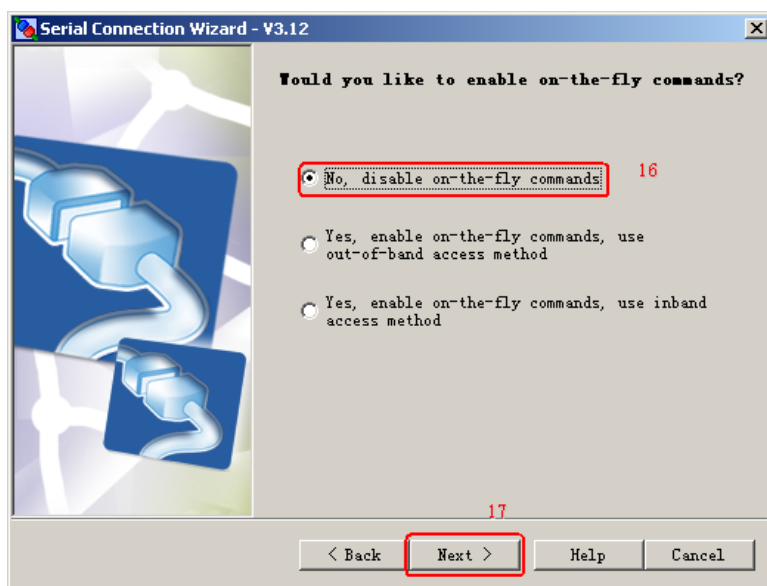
9. Choose the IP which is fit for the device.
 (If the device IP is not in this local network, then first use Change IP to assign a IP to it)



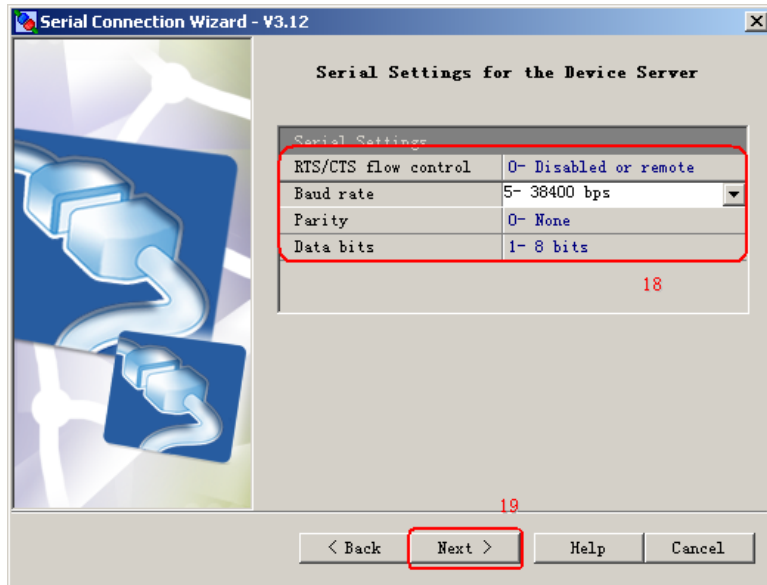
12. Set up the connection with the device by VSP



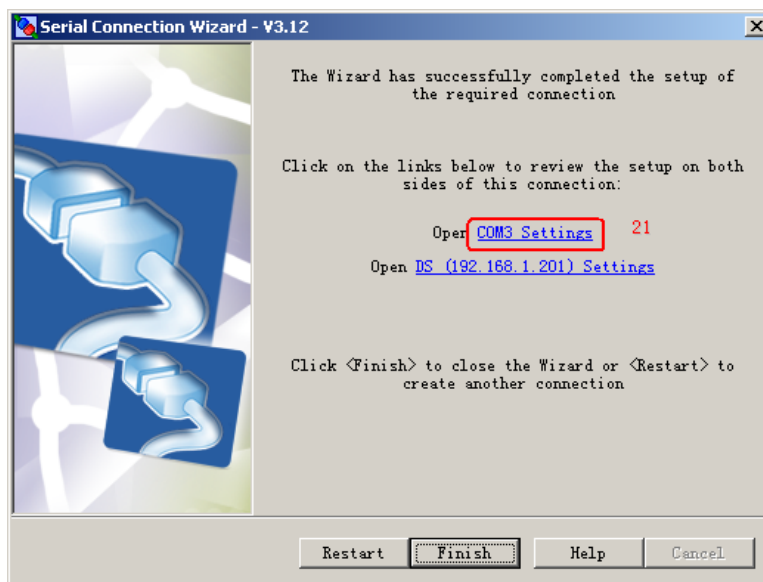
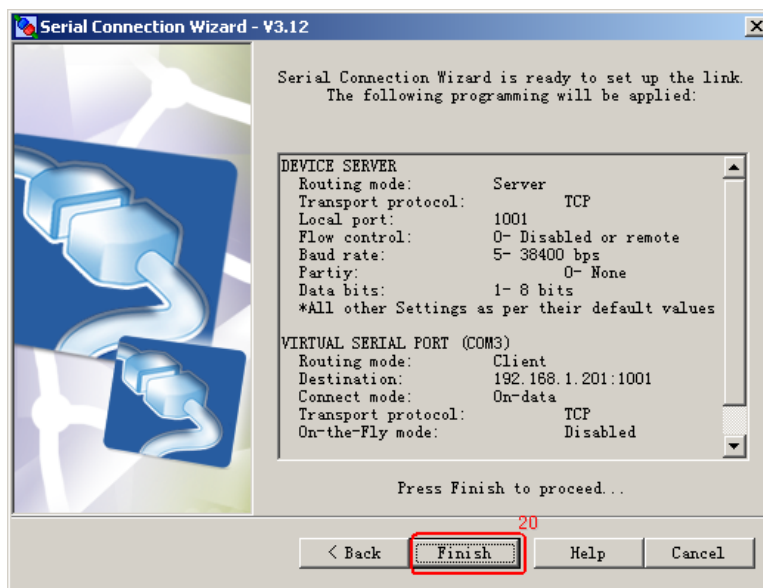
15. This is to set up the TCP transport connection

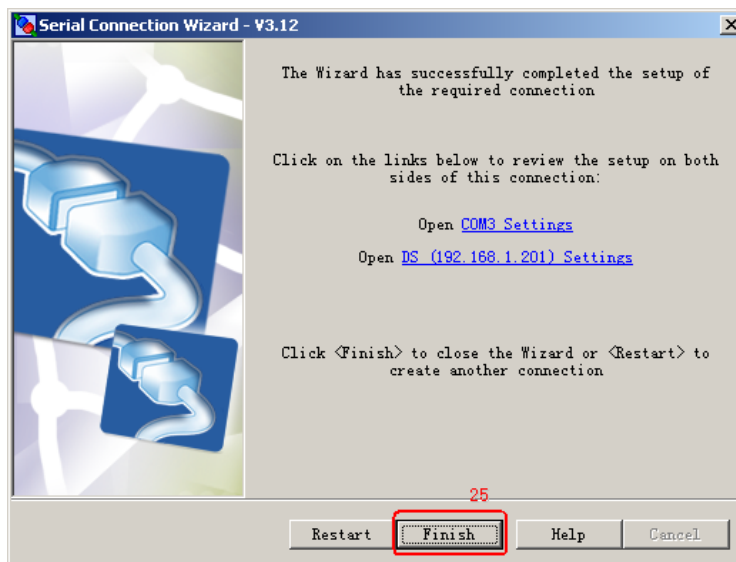
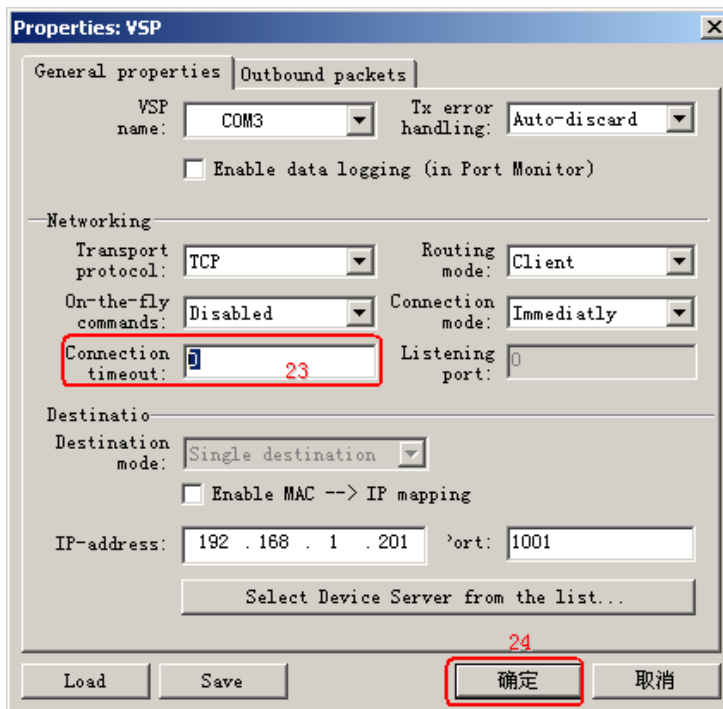
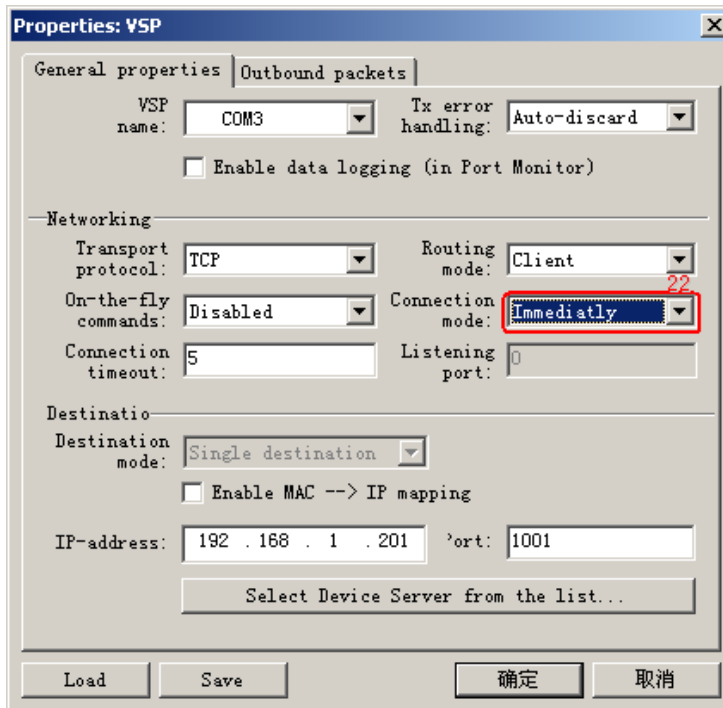


16. Prohibit on-the-fly commands



18. The baud rate should be 9600, others are the same as the picture.





5. Software Needed

Any kind of comm. port monitor software can be used.

The setting should be as follows:

Baud rate: 9600

Parity: None

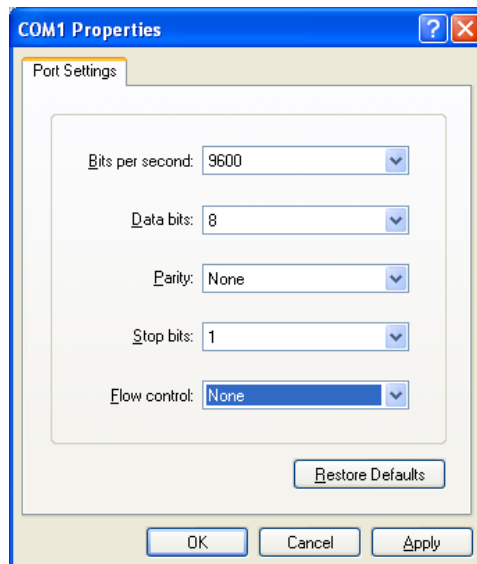
Data bit: 8

Stop bit: 1

And the comm. Port should be open.

If your PC doesn't have any kind of such software, you can use the Hyper Terminal to receive, do as follow:

- a) Open: Start – Programs – Accessories – Communications – Hyper Terminal
- b) Then it will pop-up “Location Information”, choose “Cancel” -- “Yes” – “OK”
- c) After that, it will pop-up “Connection Description” window. Put a name you like and choose a icon you like. Then choose the right comm. Port you are using(eg, Com 3) in the “Connect To” window. Set the ports as below:



- d) Finish and you can read the cards.

6. Card Reading

Put the cards near to induction area, the cards information will be read and showed in the “Hyper Terminal” with a beep and OK LED flash.